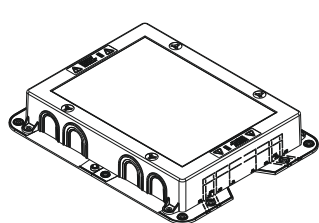


SCATOLA IN PLASTICA PER INSTALLAZIONE TORRETTA A SCOMPARSA ALL'INTERNO DELLA PAVIMENTAZIONE IN CALCESTRUZZO

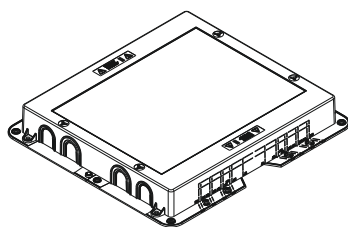
CAJA DE PLÁSTICO PARA INSTALAR UNA CAJA DE SUELO EN EL INTERIOR DEL PAVIMENTO DE HORMIGÓN

BOX FOR INSTALLING A SHALLOW FLOOR BOX INSIDE THE CONCRETE FLOORING

BOÎTE EN PLASTIQUE POUR L'INSTALLATION D'UNE TOURELLE CACHÉE À L'INTÉRIEUR DU SOL EN BÉTON



12000/G201



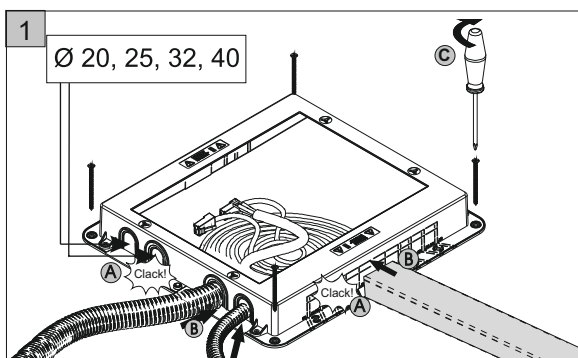
12000/G401

La scatola consente di essere regolata in altezza tra 55mm e 90mm

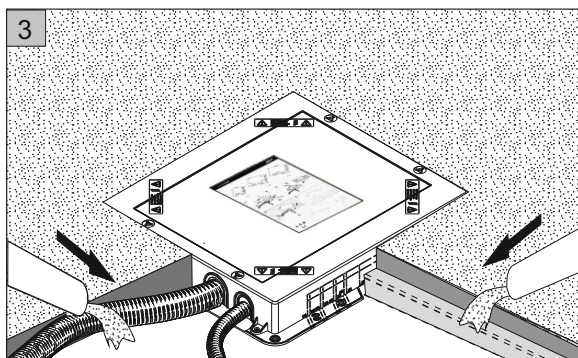
La caja permite ser regulable en altura entre 55mm y 90mm

The box allows to be adjusted in height between 55mm and 90mm

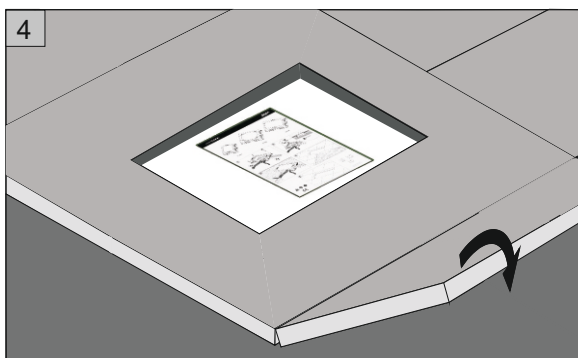
Le boîtier permet d'être réglé en hauteur entre 55mm et 90mm



2
Dopo avere posizionato e fissato la scatola, sigillarla con l'apposita protezione a corredo / Después de posicionar y fijar la caja, sellarla con la protección especial suministrada / After having positioned and fixed the box, seal it with the special protection supplied / Après avoir positionné et fixé le boîtier, scellez-le avec la protection spéciale fournie

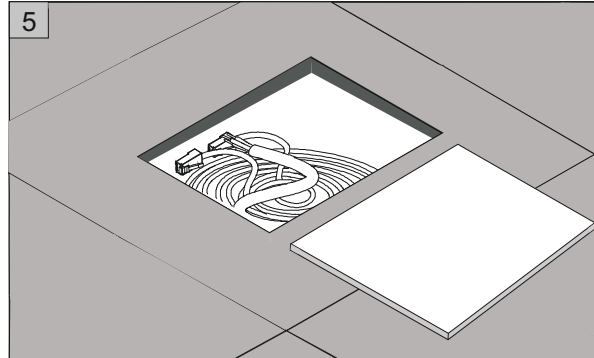
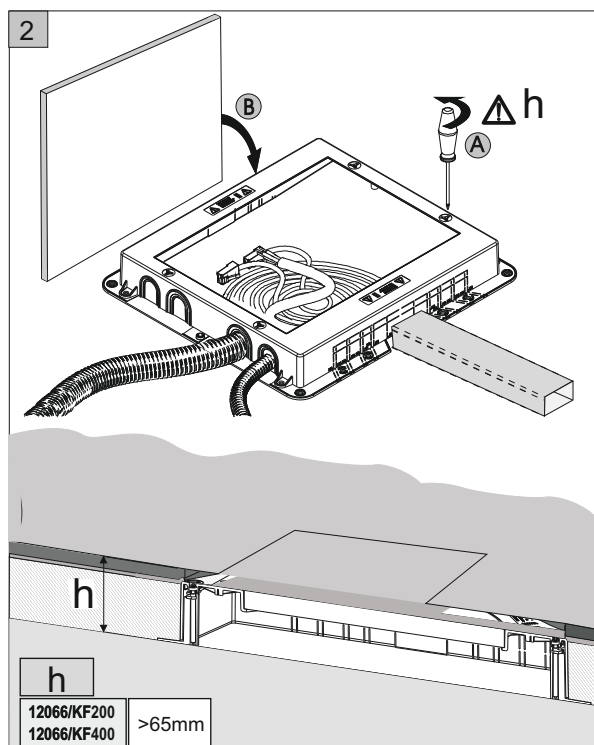


3
Gettare il calcestruzzo / Echar el hormigón / Cast the concrete / Couler le béton

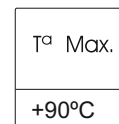
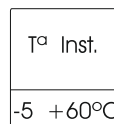
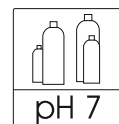


4
Posizionare la pavimentazione di finitura / Coloque el piso de acabado / Place the finishing flooring / Placer le revêtement de sol de finition

5
Rimuovere la protezione / Retire la protección / Remove the protection / Retirer la protection



UNE-EN-60.670



URMET S.p.A. Via Bologna 188/C 10154 TORINO (Italy)
http://www.urmet.com - E-mail: info@simonurmet.com

Linea dedicata installatori: +39 011 23 39 810
Linea dedicata privati: +39 011 23 39 800

MADE IN SPAIN

LBT21116